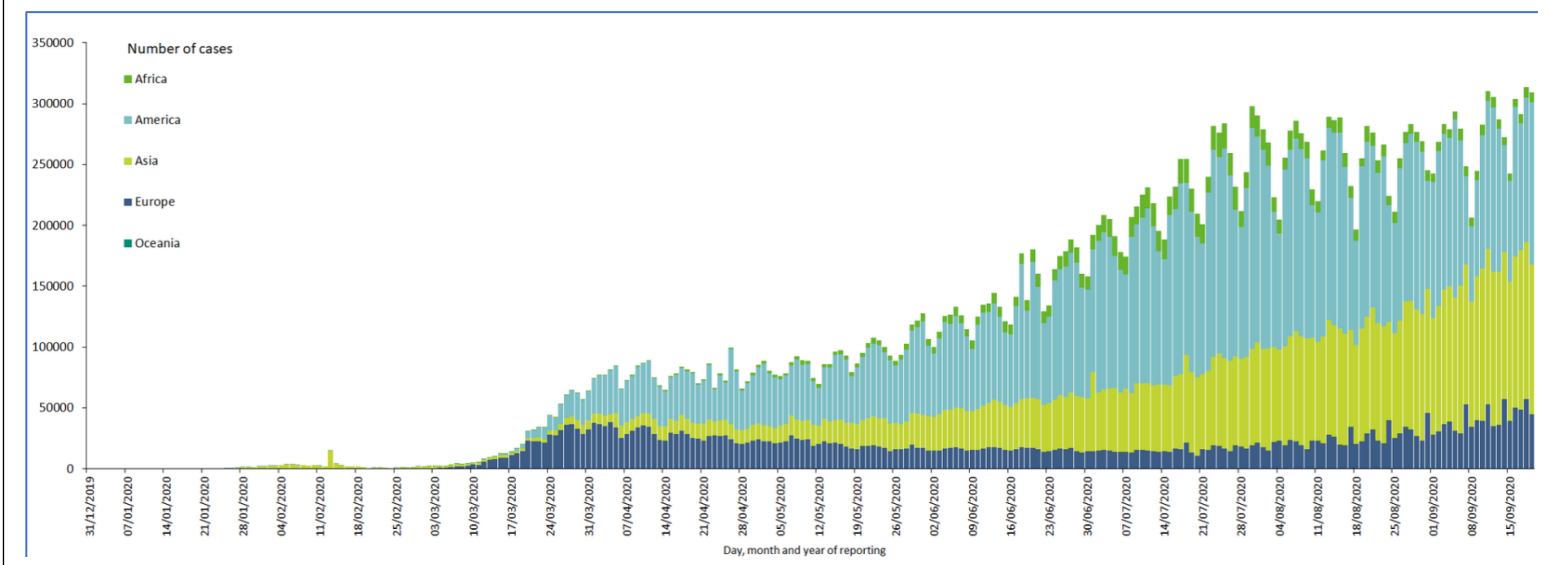




Contacts: Dr. Catherine Sozi; catherine.soz@un.org, Dr. Tugumizemu Victor; tugumizemuv@who.int, +251904055745

# WHO RESPONSE

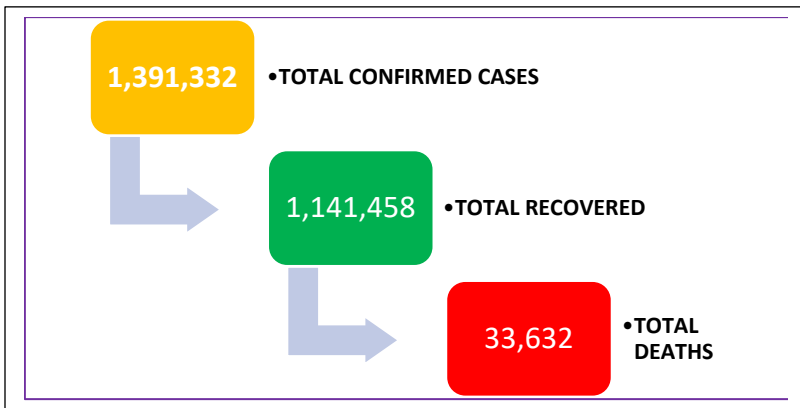
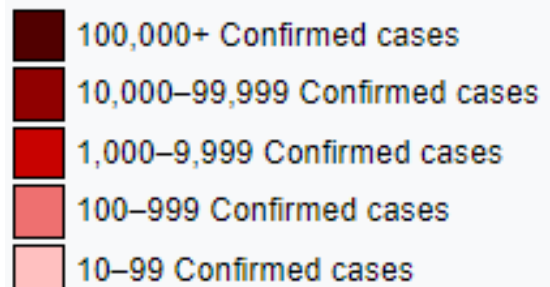
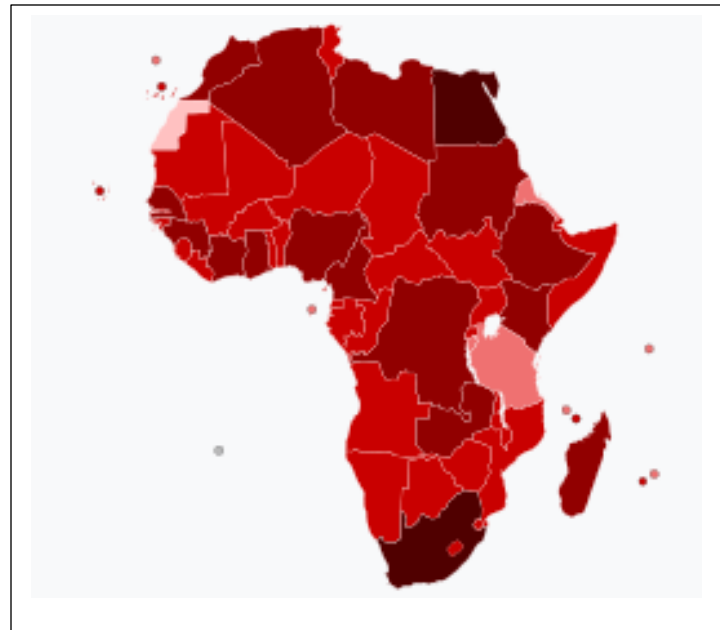
Fig. 1: Global distribution of COVID-19 cases as of 19 Sep 2020



## AFRICA

- A total of 42,821 (3.8%) health workers from 42 countries has been infected, with South Africa having 64% (27,360/42 821) of all the reported cases. Liberia 15.6% (208/1,334), Niger 15.6% (184/1,182) and Guinea-Bissau 12.2% (282/2,303), have the highest country specific proportion of health worker infections among confirmed cases
- Twenty-one health worker infections were reported retrospectively from Namibia (11) and Uganda (10)
- A total of 118 new COVID-19 related deaths occurred in 11 countries
- South Africa has registered about 58% of all the reported cases in the WHO African region and the top five countries collectively accounting for 77% of all reported cases
- Seventy-four (74%) countries in the region are experiencing community transmission, 19% have clusters of cases and 6% have sporadic cases of COVID-19.

Fig. 2: Confirmed COVID-19 cases in Africa; 18-Sep-2020



# ETHIOPIA

Fig. 3: Epidemiological details of confirmed COVID-19 cases in Ethiopia, 19-Sep 2020

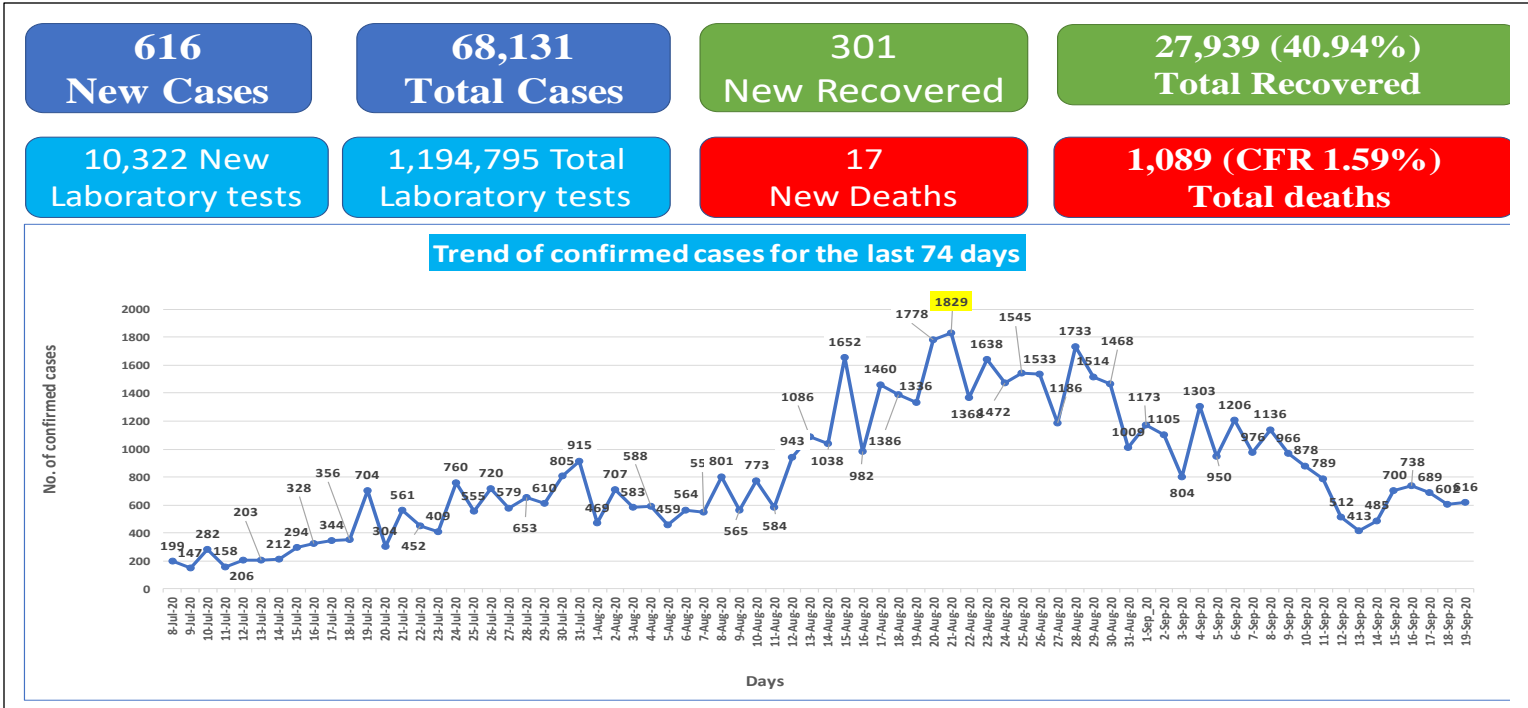


Fig. 4: Total confirmed COVID-19 cases per region in Ethiopia, 19-Sep 2020

