

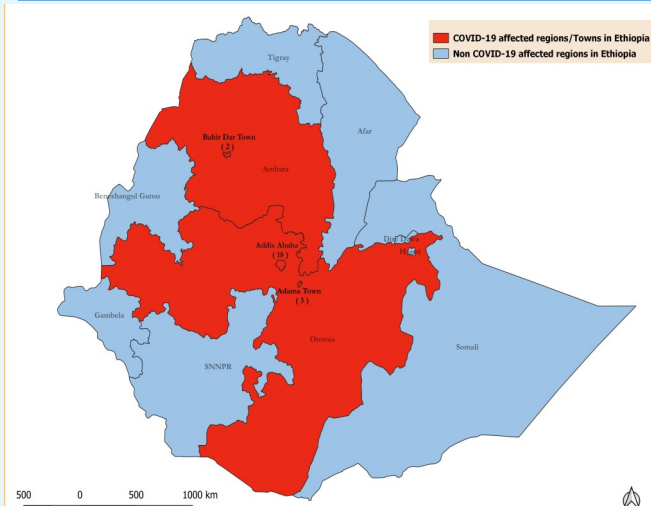
|          |   |
|----------|---|
| Date     | Updated on 30-March 2020 @ 17:00  |
| S/N      | Situation Report 049  |
| Contacts | Dr. Grace Fombad; fombad@un.org, +251911508218<br>Dr. Tugumizemu Victor; tugumizemuv@who.int, +251904055745 |

## WHAT IS THE SITUATION IN ETHIOPIA

|                              |                                |                      |                       |
|------------------------------|--------------------------------|----------------------|-----------------------|
| NEW CASE 4<br>TOTAL CASES 23 | NEW DEATHS: 0<br>TOTAL DEATH 0 | TOTAL<br>RECOVERED 1 | TOTAL<br>CONTACTS 540 |
|------------------------------|--------------------------------|----------------------|-----------------------|

- ◆ Three regions: Addis Ababa, Amhara and Oromia reporting cases
- ◆ The UN has developed a COVID-19 response plan to support government response
- ◆ Strengthen the preparedness and response activities for the regional governments

Figure 2: Regions reporting confirmed COVID-19 case in Ethiopia as of March 30, 2020



- ◆ Signs and symptoms of COVID-19 are: Fever, Cough, Sore throat, Difficulty in breathing and other flu like symptoms such as running nose and sneezing
- ◆ The public is advised to report any suspected cases to the nearest health facility or call **8335** or **+251929908433** or **+251 929907772**

**Total confirmed cases**  
634835

**Total death**  
29891

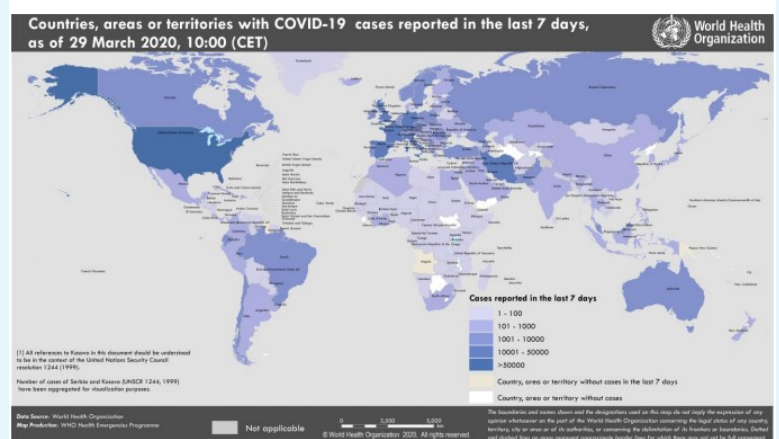
**Countries /Regions affected globally**  
177

**Countries affected in Africa**  
46

### GLOBAL HIGHLIGHTS

- The G20 countries committed to work together to improve the production and equitable supply of essential products to combat COVID-19
- WHO has published guidelines to help countries balance the demands of responding directly to COVID-19, while maintaining essential health services such as routine vaccination, care during pregnancy and childbirth, treatment for infectious and noncommunicable diseases and mental health conditions and blood services.
- WHO has also published a detailed, practical manual on how to set up and manage treatment centres for COVID-19 to enable countries manage the surge in COVID-19 cases while maintaining essential services

Figure 1. Countries, territories or areas with reported confirmed cases of COVID-19, 29 March 2020



- ◆ Take preventive measures extremely seriously
- ◆ Avoid hand-shake and hugging at all times
- ◆ Wash hands frequently with soap and water or use an alcohol base hand rub
- ◆ Avoid unnecessary movement
- ◆ Work from home unless you are required to come to the office